

Clarinet in B \flat 3

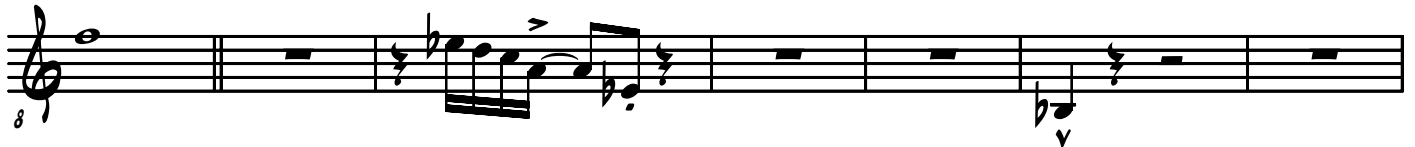
SHAKE

version 2

S. Ljungbladh
Arr. C. Wallin



A



B



C



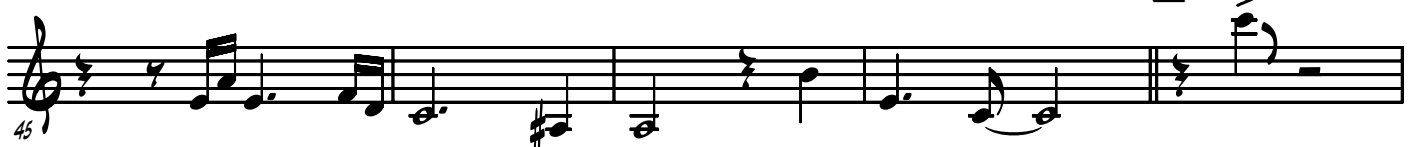
D



E



F





Musical staff 1, measures 50-54. The staff begins with a treble clef and a 7/8 time signature. It contains a series of eighth and sixteenth notes with various articulations such as accents and slurs. Measure 50 starts with a dynamic marking of *50*.



Musical staff 2, measures 55-59. This staff includes a circled 'G' above the first measure, indicating a first ending. It features a mix of eighth and sixteenth notes with accents and slurs. Measure 55 is marked with *55*.



Musical staff 3, measures 60-64. The staff continues with eighth and sixteenth notes, including some beamed sixteenth notes. Measure 60 is marked with *61*.



Musical staff 4, measures 65-69. This staff concludes the piece with a final cadence, including a fermata over the final note. Measure 65 is marked with *67*.